

## Step 1 Car Hood



Start by popping the hood of your car.  
No need to unlatch.

## Step 2 Corner Seams



Find either one of the top corner seams and tuck around the corresponding corner of the cars hood.  
This will be your anchor as you stretch the rest of the hoodie.

## Step 3 Corner Seams



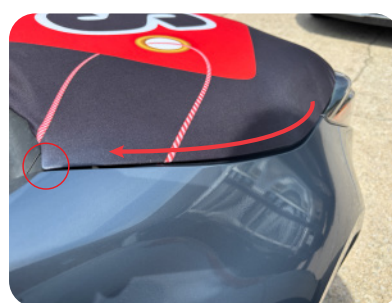
With your fingers under the fabric you can guide the bottom corner under the lip of the open hood.

## Step 4 Application



Secure the opposite corner on the bottom of the hood.  
The tension of the elastic will help it curl around the lip of the hood.

## Step 5 Application



Now you can pull the final seam around the top of the hood.  
Will appear seamless and clean once all the elastic is *taught*.

## Step 6 Final Adjustments



With the hoodie on you can now adjust the position and apperance for the best looking fit.

\* Please Note: This product is designed to be used on a stationary vehicle located on a dealership lot.

**Kit Includes (per 1)**  
Car Hoodie